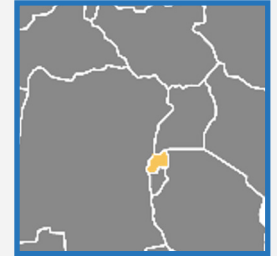


Rwanda

Capital city: Kigali
Inhabitants: 12.3 Million



INSTITUTIONAL SETTING AND PURPOSE

The Rwanda Water Resources Board (RWB) is an institution in charge of implementing policies and strategies related to management of natural water resources, comprising monitoring and coordination among the sectors. The water resources monitoring programme of Rwanda, having a groundwater compo-

nent, is designed to provide to stakeholders and decision makers with information to support the sustainable development and management of Rwanda's water resources, with particular attention to water productivity in agriculture and to adaptation to climate change.

CHARACTERISTICS OF THE NETWORK

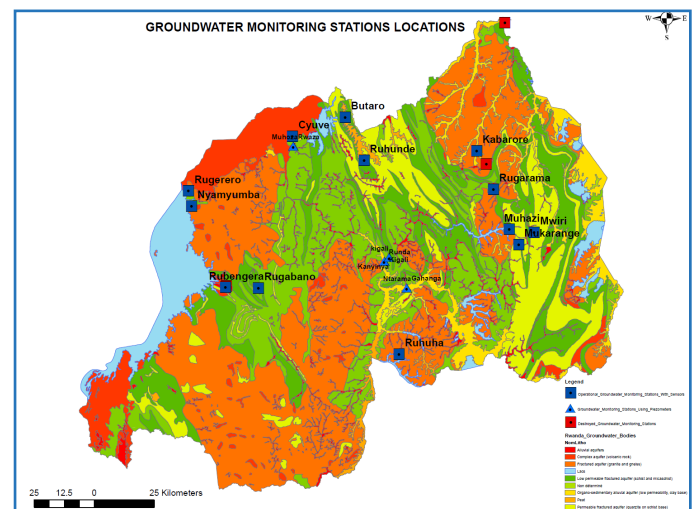
In 2016, groundwater levels were recorded from twelve groundwater monitoring stations, including four piezometers where data were collected manually, and eight monitoring stations equipped with sensors (divers and barometers) recording data

twice per day (at 6:00 and 18:00). The number of monitoring stations has been increasing with time, and currently, the monitoring network is composed by eight piezometers and thirteen groundwater monitoring stations equipped with sensors.

PROCESSING AND DISSEMINATION

The RWB produces an Annual Water Status Report which is an overview of key parameters and locations indicative of the overall state of Rwanda's water resources. The report is concise and meant for a broad public; It is divided into four sections: surface water quantity, groundwater quantity, water quality and water use. The RWB also maintains the Rwanda Water Portal, which is a web platform that stores and facilitates access to water resources related information such as water quality, surface water monitoring results, groundwater monitoring results, water laws and policies. Data are presented in various formats and with various levels of detail/accessibility, according to the type of user. The groundwater section of the portal contains a map with the location of 21 groundwater monitoring stations, and time-series of groundwater levels for the existing stations having data.

Figure 1 - Groundwater Monitoring stations of Rwanda. Source: Rwanda Water Resources Board



Sources

- **Annual Water Status Report for 2016-2017, Rwanda Water and Forestry Authority (RWFA)** - <https://waterportal.rwfa.rw/sites/default/files/2018-01/Annual%20Water%20Status%20Report.pdf>;
- **Annual Water Status Report for 2019-2020, RWB** - <https://waterportal.rwb.rw/sites/default/files/2018-01/Annual%20Water%20Status%20Report.pdf>;
- **Feedback from the Rwanda Water Resource Board (RWB)** - received on 05-10-2020;
- **IGRAC. Information collected during the regional training programme on Integrating Groundwater Management within River Basins held from 15-17 January 2019 in Nairobi, Kenya** - <https://www.un-igrac.org/news/integrating-groundwater-management-river-lake-basins-eastern-africa>;
- **Rwanda Water Resources Board (RWB)** - <http://rwb.rw/index.php?id=2>;
- **Rwanda Water Resource Portal** - <https://waterportal.rwb.rw/>; and
- **Rwanda Water Resource Portal, Groundwater monitoring network** - https://waterportal.rwb.rw/data/ground_water.